

The European Association for  
Traditional Ships in Operation

# The European Peninsula



# EMH membership

## National members: 8

Denmark  
Finland  
France  
Germany  
Netherlands  
Norway  
Sweden  
United Kingdom



## Regional members: 2

Galicia, Spain  
Proteas, Greece



# EMH membership

## Advisory members: 19

Museums and boat centres



- Antwerpen, BE
- Rudkøbing, DK
- Barcelona, ES
- San Sebastian, ES
- Helsinki, FI
- Paris, FR
- Bremerhaven, GE
- Amsterdam, NL
- Enkhuizen, NL
- Rotterdam, NL
- Kristiansand, NO
- Norheimsund, NO
- Gratangen, NO
- Greenwich, UK
- Seixal, PT
- Lisbon, PT
- Karlskrona, SE
- Klaipeda, LT
- Rovinj, HR

# EMH membership

## Associate members: 12

International Council Maritime Museums (ICMM)

Sail Training International (STI)

Baltic Sail / Hanse Sail Rostock

Sammenslutningen af Mindre Erhvervfartøjer (SME), DK

Estonian Association of Historical Ships, EE

Forbundet Kysten, NO

Portuguese Association for Maritime Heritage (APMM), PT

STS General Zaruski, Gdansk, PL

Goelette Grosse-Île, Montreal, Canada

Albaola - Basque Maritime Heritage Society, ES

Islandic Association of Maritime Museums, IS

NP 'Flagman-As', Moscow, RU

# EMH is member of



International Congress of Maritime Museums:  
Umbrella of Maritime Museums in the World



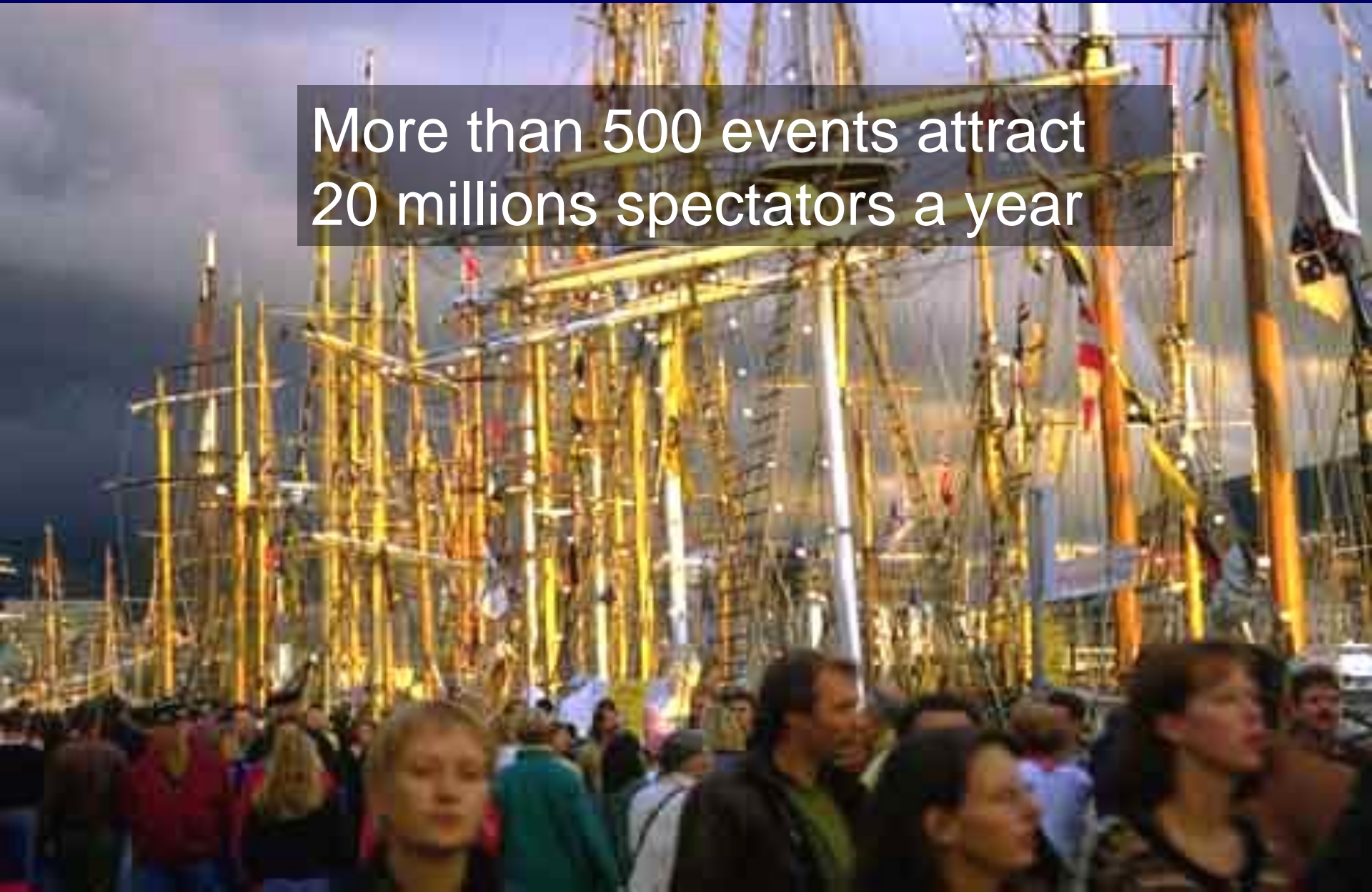
Europa Nostra:  
The voice of Cultural Heritage in Europe



Association of Maritime Museums in the Mediterranean

# Events

More than 500 events attract  
20 millions spectators a year



# Recommendation

The *Parliamentary Assembly for the Council of Europe* (PACE) Recommendation No 1468/2000  
Preserve, use, educate, joy and safe operation





## A Memorandum of Understanding for Traditional Ships signed by

*Norway*

*United Kingdom*

*Spain*

*Lithuania*

*Finland*

*Netherlands*

*Germany*

*Denmark*

*Estonia*

*Sweden*

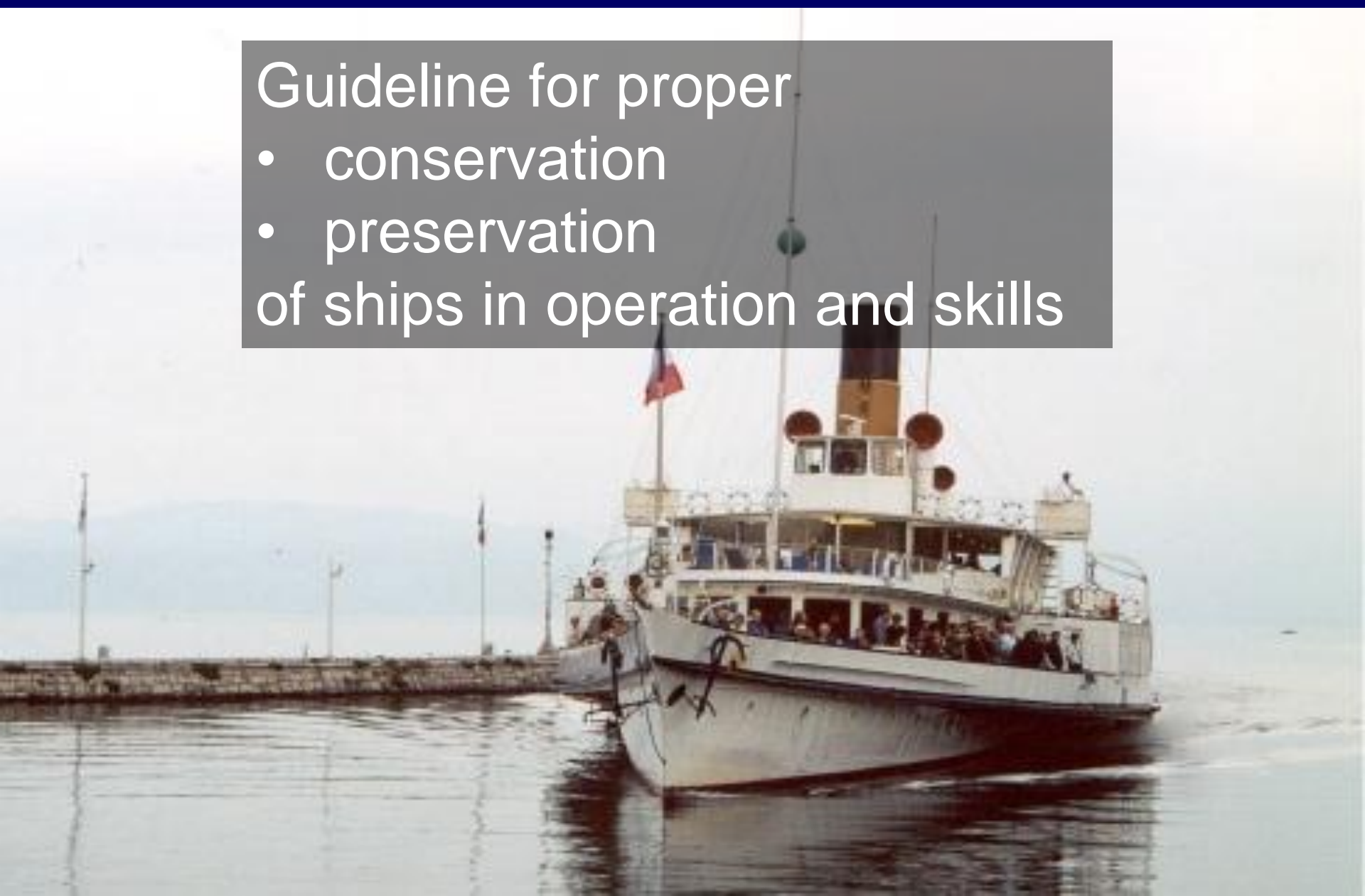


# Barcelona Charter

Guideline for proper

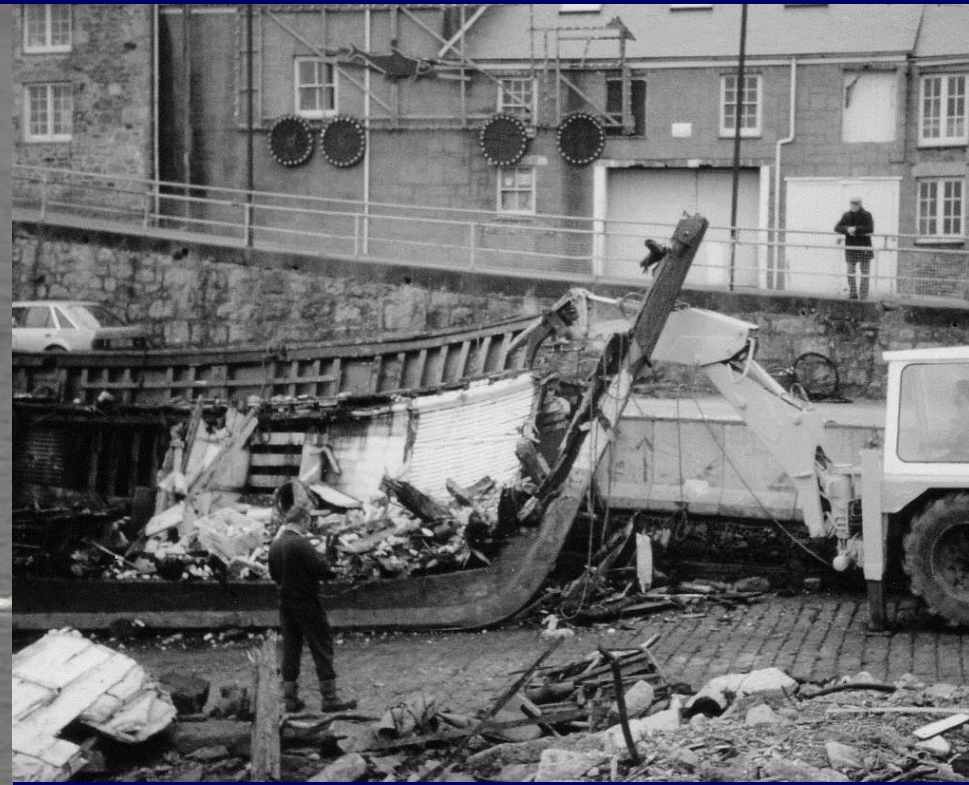
- conservation
- preservation

of ships in operation and skills



# Future Policy

EMH foresees a bright future for European Maritime Heritage with support, collaboration and a progressive policy



# EMH offers

Maritime Heritage is an economic factor

- 20 Million spectators spend € 25 per day and generate € 500 Million income for local tourism
- 10000 ships in operation spending € 25.000 in maintenance and operating do generate € 250 Million turnover for related craftsmen and suppliers



# EMH offers



- Creates awareness for the common European maritime roots
- Creates awareness of a common European identity
- Facilitates tourism development of regions

# EMH offer

- Offers training in social skills and team spirit
- Preserves maritime skills and craftsmanship, which otherwise might get lost
- Will generate thousands of motivated future officers and seafarers for Europe's merchant marine, ports, administrations and shipping companies



# Economic calculation volunteers

10.000 ships x 10 persons x 10 days x € 100 / day =  
€ 100.000.000 (100 million euros )



# Europe's Maritime Future is founded on Europe's Maritime Heritage



[www.e-m-h.eu](http://www.e-m-h.eu)